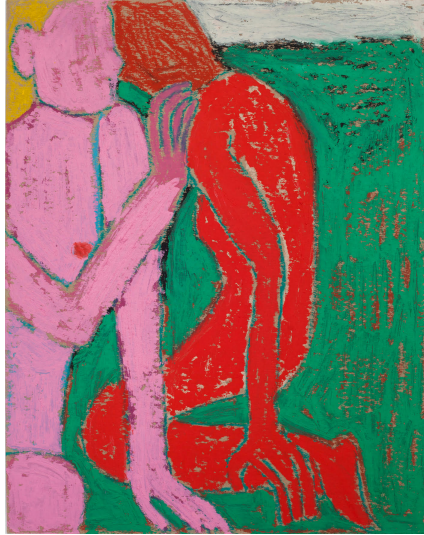


KIMIA FERDOWSI KLINE

BREATHING ON LAND

May 6th - June 11th, 2017

*Air to Skin, 2016*

Breathing on Land marks **Kimia Ferdowsi Kline's** third solo show with **Turn Gallery**.

The new paintings, saturated with color and raw expression, are simultaneously concerned with intimacy and distance in human relationships. This body of work strikes an emotional tone ranging from total joy to melancholy wonder. Archetypal elements of the natural world, such as water, fire, land and air, are used as metaphors to describe the encounter between our inner and outer worlds, our physical realities mirrored in our emotional states.

The built up surfaces of paint reveal a vulnerability and searching — the forms often feel carved out of the picture plane. One sees in each piece evidence of the underpainting, of what was covered over in order to arrive at the final image. Kline's emotionally charged yet economical mark making consistently searches for ways of effectively expressing the most basic essence in her forms, stripping them of any excess information.

The paintings, both immediate and opaque, speak to the universality of the human experience leaving space for individual interpretation regardless of culture, background, language, or race. In *Breathing on Land*, Kline defers conclusion in favor of imagination, and ultimately explores the most basic element of our survival: love.

Kimia Ferdowsi Kline's most recent exhibitions include *We Might Not Have a Planet Left Soon*, 68 Projects Gallery, Berlin, Germany with Katherine Bradford, Gina Beavers, Yevgeniya Baras among others curated by Adrienne Rubinstein. Solo exhibitions include upcoming *Bodies Not Our Own*, Marrow Gallery, San Francisco, CA, 2017; *Sky Thing*, Quirk Gallery, Richmond, VA, 2016; *As Above, So Below*, Elaine L. Jacob Gallery, Wayne State, Detroit, MI, 2016; *Landscapes For The Hungry*, Turn Gallery, New York, NY, 2015; *Eden*, Turn Gallery Pop Up, New York, NY, 2014. Group Exhibitions include *Body/Head*, Field Projects, New York, New York, 2017, *The Intuitionists*, The Drawing Center, New York, NY, 2014.

Kline was awarded *The Basil Alkazzi Residency* through The New York Foundation for the Arts 2015-2016. She curated *Say Yes*, which is currently on view at Wayne State University, Detroit, MI. This group exhibition features 22 artists, including Marina Adams, Sadie Laska, Michael Berryhill and EJ Hauser. As an extension of her studio practice Kline curates the art collection of Wythe Hotel, Brooklyn, New York.

Kline holds an MFA from San Francisco Art Institute, CA, 2011, and a BFA from Washington University, St Louis, MO, 2008 (cum laude). She currently resides and works in Brooklyn.

Opening reception will be held Saturday May 6th from 6 - 8 pm at Turn Gallery, 37 East 1st Street. *Breathing on Land* will be on view until June 11th.